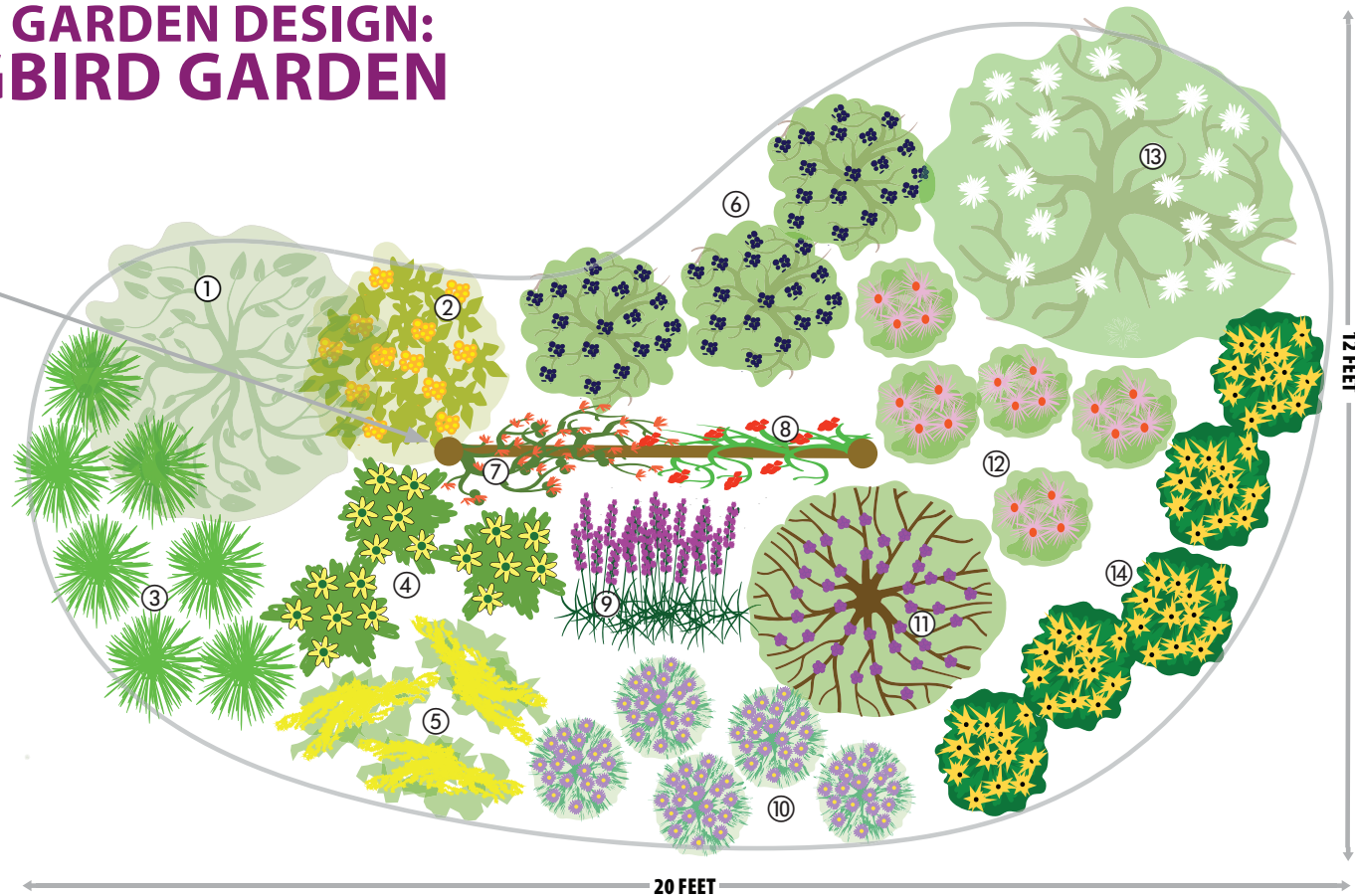


# NATIVE GARDEN DESIGN: SONGBIRD GARDEN

7 Foot  
Split Rail Fence



JAN WISE-FALES ILLUSTRATION

- ① Serviceberry (*Amelanchier arborea*) **or**  
Deciduous Holly (*Ilex decidua*) (1 plant)
- ② Golden Currant (*Ribes odoratum*) (1 plant)
- ③ Pennsylvania sedge (*Carex pennsylvanica*) (7 plants)
- ④ Texas Greeneyes (*Berlandiera texana*) (3 plants)
- ⑤ Cliff Goldenrod (*Solidago drummondii*) (3 plants)
- ⑥ Black Chokeberry (*Aronia melonocarpa*) (3 plants)
- ⑦ \*Coral Honeysuckle (*Lonicera sempervirens*) (1 plant)
- ⑧ \*American Bittersweet (*Celastrus scandens*) (1 plant)

Choose a male and a female plant to ensure fruiting. Some native growers include male and female plants in the same pot. Alternatively, another vine can be substituted for the bittersweet.

- ⑨ Eastern Blazingstar (*Liatris scariosa*) (7 plants)
- ⑩ Aromatic Aster (*Symphyotrichum oblongifolium*) (5 plants)
- ⑪ American Beautyberry (*Callicarpa americana*) (1 plant)
- ⑫ Purple Coneflower (*Echinacea purpurea*) (5 plants)
- ⑬ Rusty Blackhaw (*Viburnum rufidulum*) **or**  
Flowering Dogwood (*Cornus florida*) (1 plant)
- ⑭ Orange Coneflower (*Rudbeckia fulgida* var. *umbrosa*) (5 plants)

\*vine planted on fence